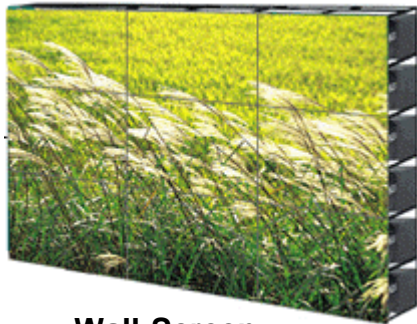

Optical DVI extension modules applications



www.opticis.com

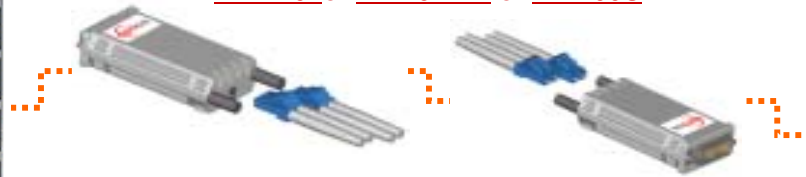
Optical DVI extension modules

Sign Board or Wall-Screen Application



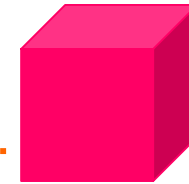
Wall-Screen

A cable per a projection screen: 10m, 20m, 50m, and 70m
Each projection TV: WXGA or XGA
Fiber Detachable DVI Module – Max. 1650 feet (500 meters)
M1-1P0I or M1-201-TR or M1-100U



X 16
Optical DVI Cable (Pure Fiber or Hybrid Fiber)

Multi-cube Processor:
making one screen on
matrix displays



Located closely
in a same room



3D Sign Board



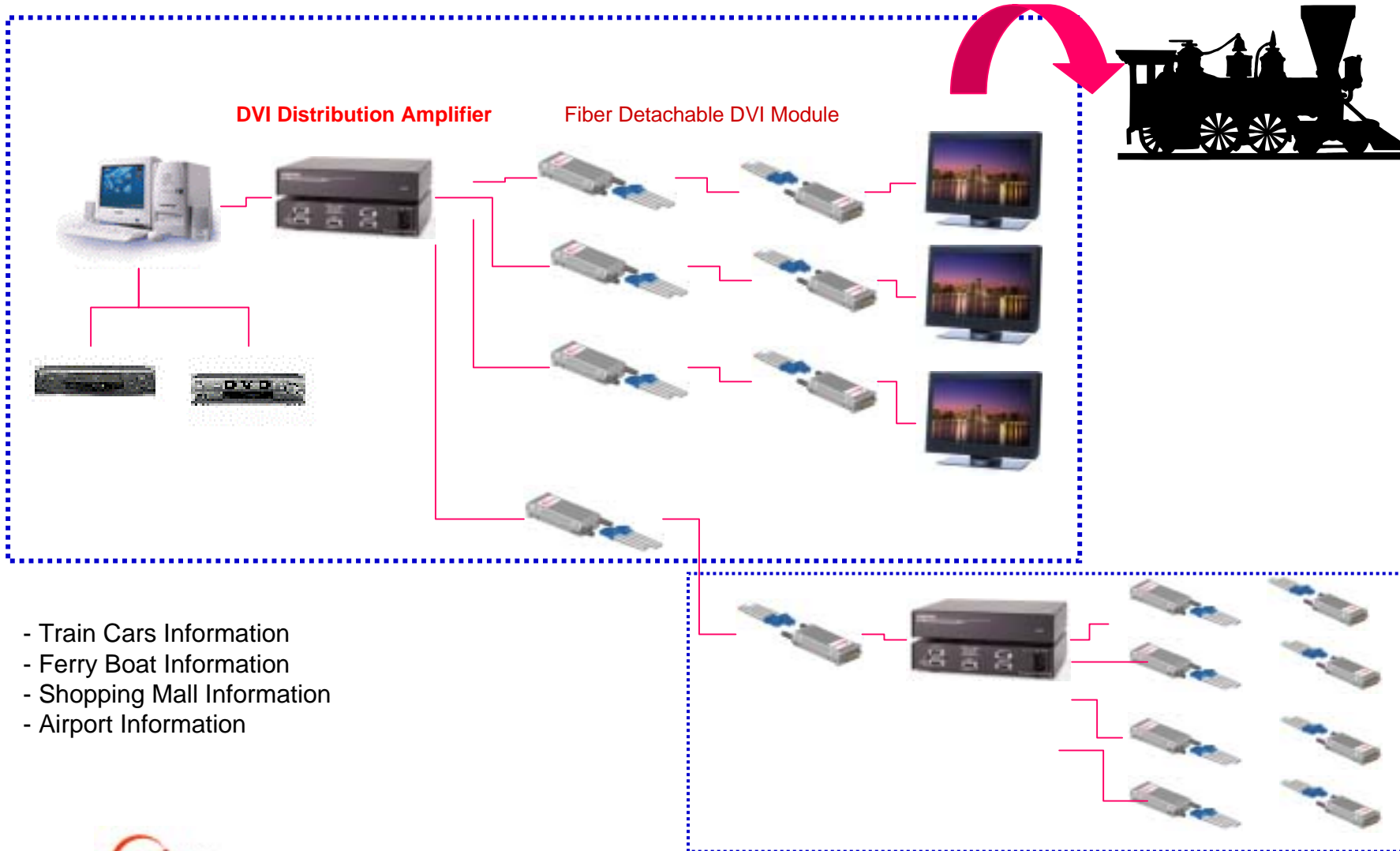
Host
Controller

- Stored Off-line Sources
- Networked Sources
- Cabled Sources



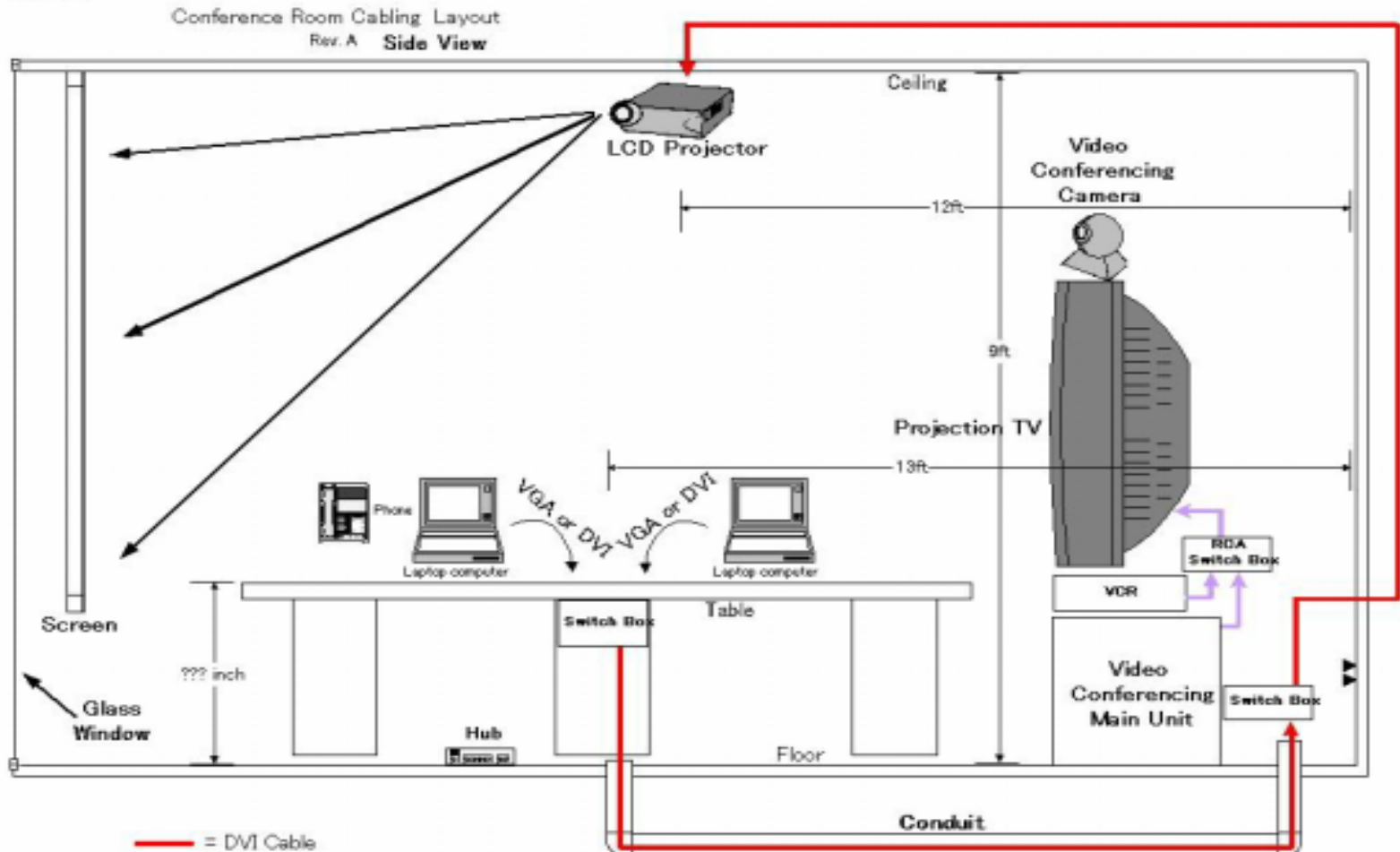
Optical DVI extension modules

Information Display Systems



Optical DVI extension modules

Conference Room



Optical DVI extension modules

High Resolution TFT-LCD Panel



IBM T221 22.2in (56.4cm) wide TFT LCD
Display QUXGA-wide 3840x2400 pixels

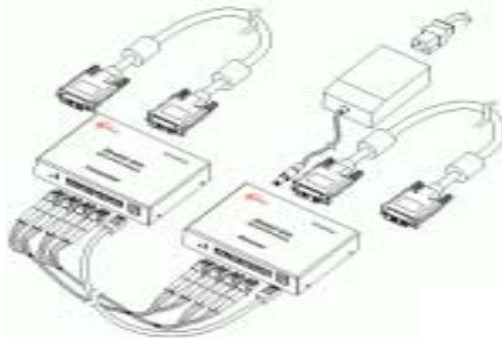


2 X Opticis M1-100-18 60ft (18m)
DVI optical link cables

- **Medical Display**
- **Expert Graphic Design Display**
- **Animation Design**



30" Cinema HD Display



Dual Link DVI optical link Module



Fire GL4 2D/3D workstation graphics controller with dual DVI outputs, 128 Mb DDR SGRAM, IBM chipset and 300 MHz RAMDAC

Power Mac G5



NVIDIA GeForce 6800
GT or Ultra DDL Card



Dual link DVI connectors to deliver up to 2560 by 1600 resolution

Optical DVI extension modules

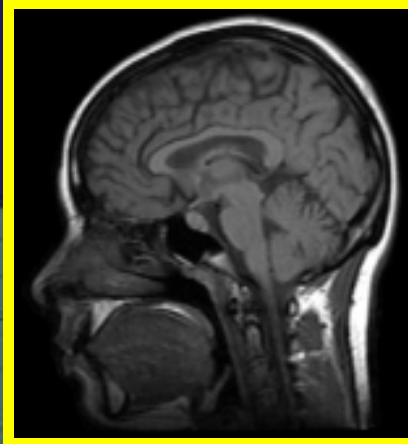
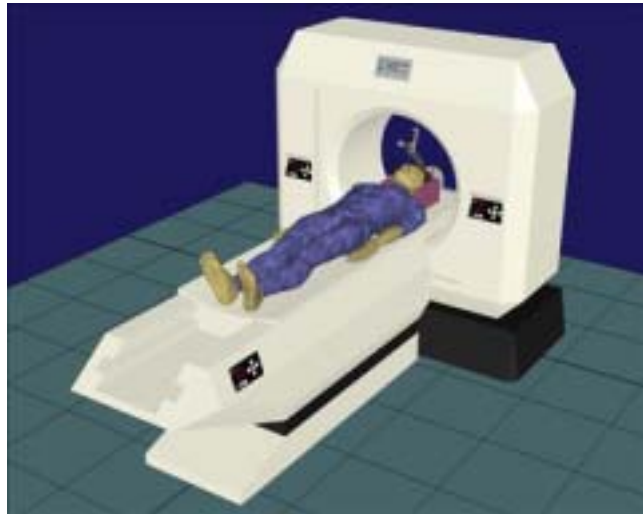
Open Space



Discount Store



Hospital (PACS)



Public Zones

